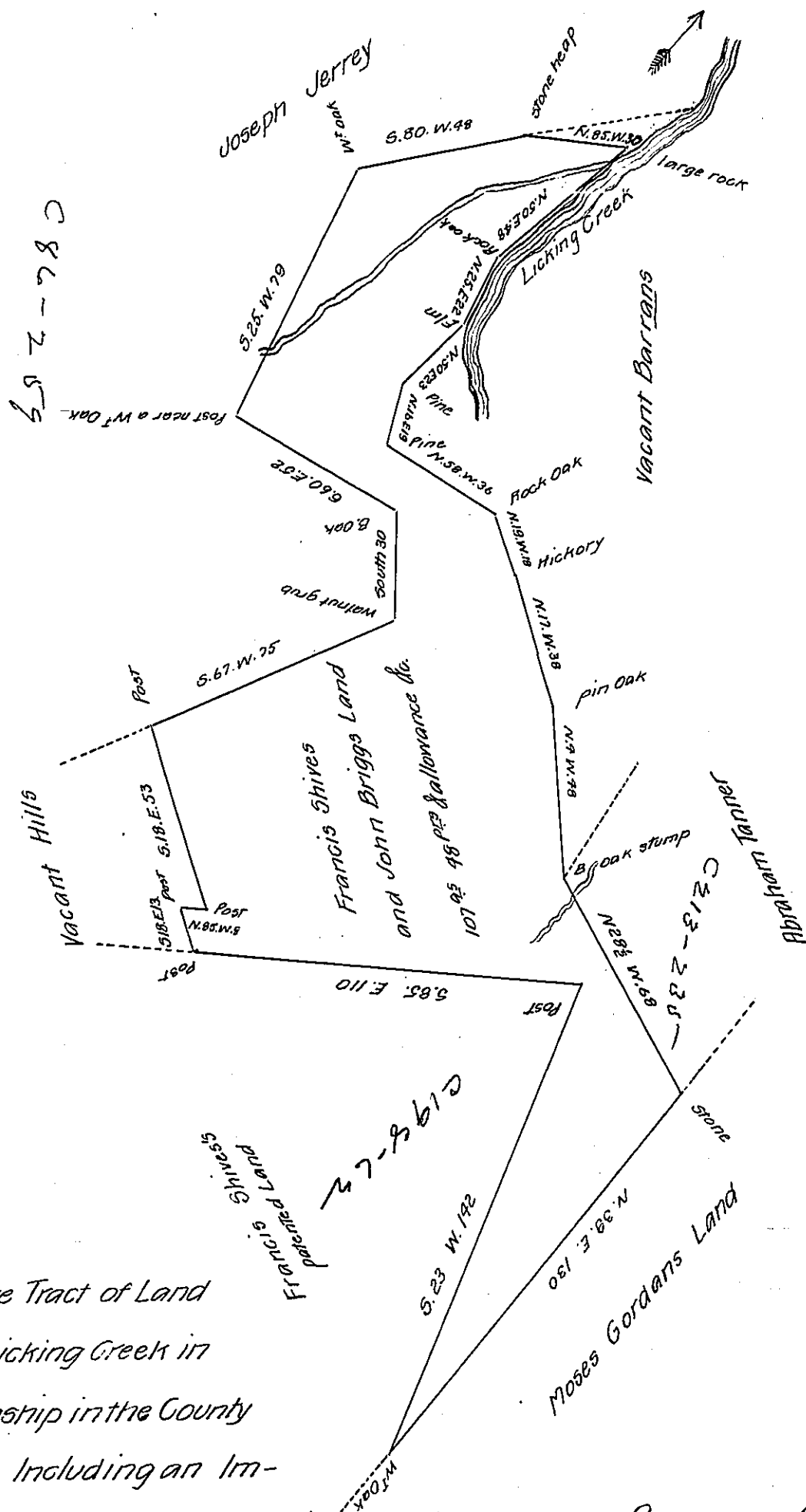


FORM NO. 1.



The above Tract of Land
 Situate on Licking Creek in
 Bethel Township in the County
 of Bedford Including an Im-
 provement. Containing one hundred and seven Acres and forty eight
 perches, with the usual allow^{ce} of six p^{ct} Cent for Roads & Surveyed for
 Francis Shives and John Briggs the eighth day of April 1802. In pursu-
 ance of a Warrant dated the eighteenth day of May 1798.

William Piper D.S.

To Samuel Cochran Esq^r S.G.

IN TESTIMONY that the above is a copy of the original remaining on file in
 the Department of Internal Affairs of Pennsylvania, made
 conformably to an Act of Assembly approved the 16th day of
 February 1833, I have hereunto set my hand and caused
 the Seal of said Department to be affixed at Harrisburg,
 this fourteenth day of October 1907

Henry Houck
 Secretary of Internal Affairs.